

The logo icon consists of six white triangles arranged in two rows of three. The top row has three downward-pointing triangles, and the bottom row has three upward-pointing triangles, creating a central negative space.

Moldtech

precast concrete equipment

INDEX

- 1. Definition of our business
- 2. Services
- 3. Global response
- 4. Key figures
- 5. An adaptative performance
- 6. Featured projects
- 7. Location and contact

Design, manufacturing & installation of **PRECAST CONCRETE EQUIPMENT FOR**

Industrial



Residential



Civil Works



A company committed with
competitiveness, delivery **deadlines** & professional **service**
for **tailor made** projects

INDEX

1. Definition of our business
2. Services
3. Global response
4. Key figures
5. An adaptative performance
6. Featured projects
7. Location and contact

MOLDTECH IS A FAMILY RUN COMPANY ESTABLISHED IN 1986
TO BECOME A WORLDWIDE REFERENCE IN THE PRECAST CONCRETE SECTOR.

WE REINVEST
ANNUAL PROFITS TO
IMPROVE METHODS,
KNOWLEDGE
AND CAPACITY TO
CONTINUOUSLY
STRENGTHEN
THE COMPANY.



INDEX

1. Definition of our business
2. Services
3. Global response
4. Key figures
5. An adaptative performance
6. Featured projects
7. Location and contact

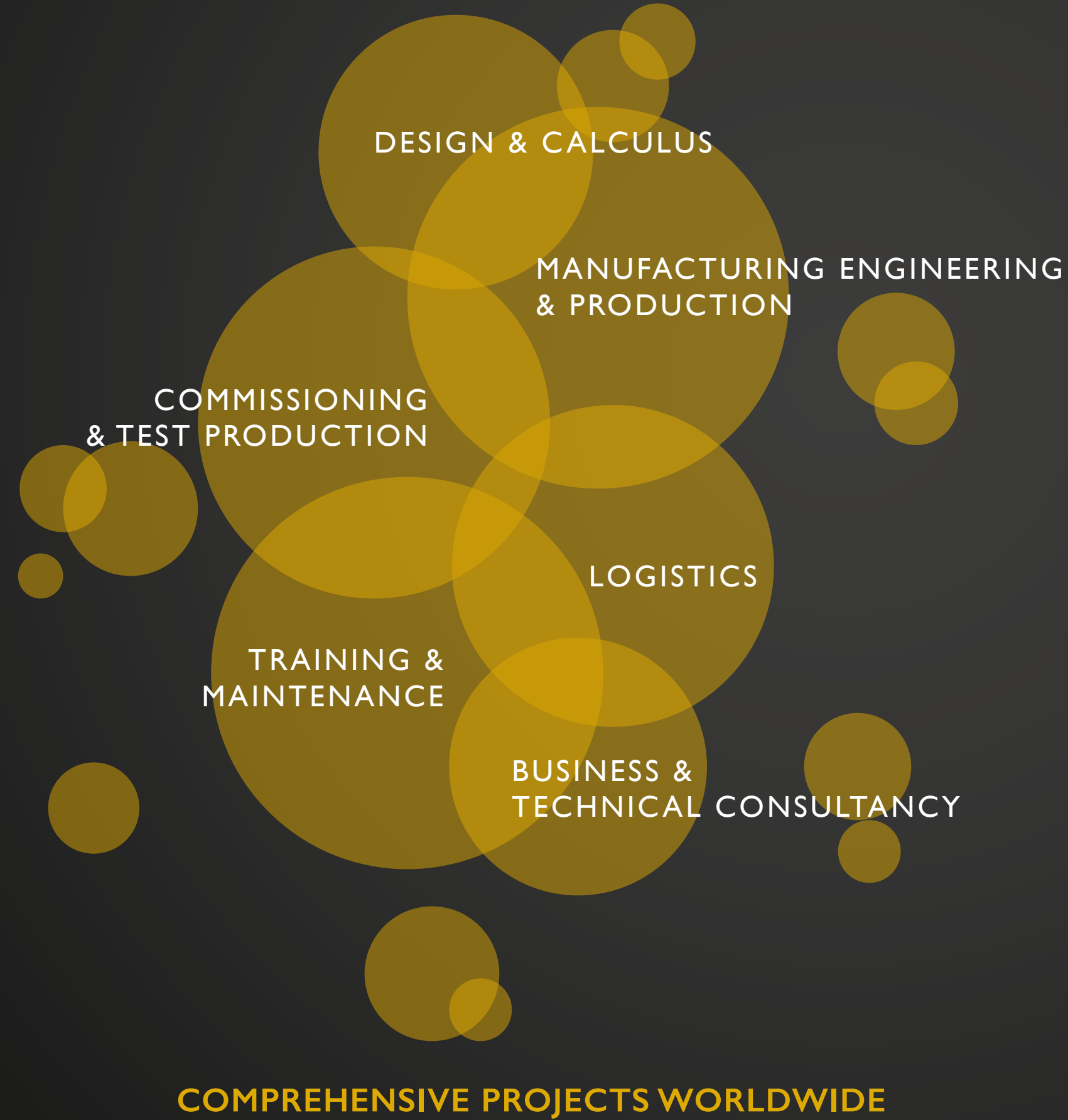
MOLDTECH DEVELOPS FLEXIBLE & COMPREHENSIVE PROJECTS
TAILORED TO THE HIGHEST QUALITY, PRODUCTIVITY & SECURITY STANDARDS.



WE STRIVE DAILY
TO SERVE OUR
CUSTOMERS
WITH EFFICACY,
PROACTIVITY AND
PROXIMITY.

INDEX

- 1. Definition of our business
- 2. **Services**
- 3. Global response
- 4. Key figures
- 5. An adaptative performance
- 6. Featured projects
- 7. Location and contact



MODERN FACILITIES
+ 15,000 SQM

8,000 SQM PRODUCTION
1,500 SQM CNC MACHINES

MULTIDISCIPLINARY
EXPERTISE TEAM

INDEX

- 1. Definition of our business
- 2. Services
- 3. Global response
- 4. Key figures
- 5. An adaptative performance
- 6. Featured projects
- 7. Location and contact

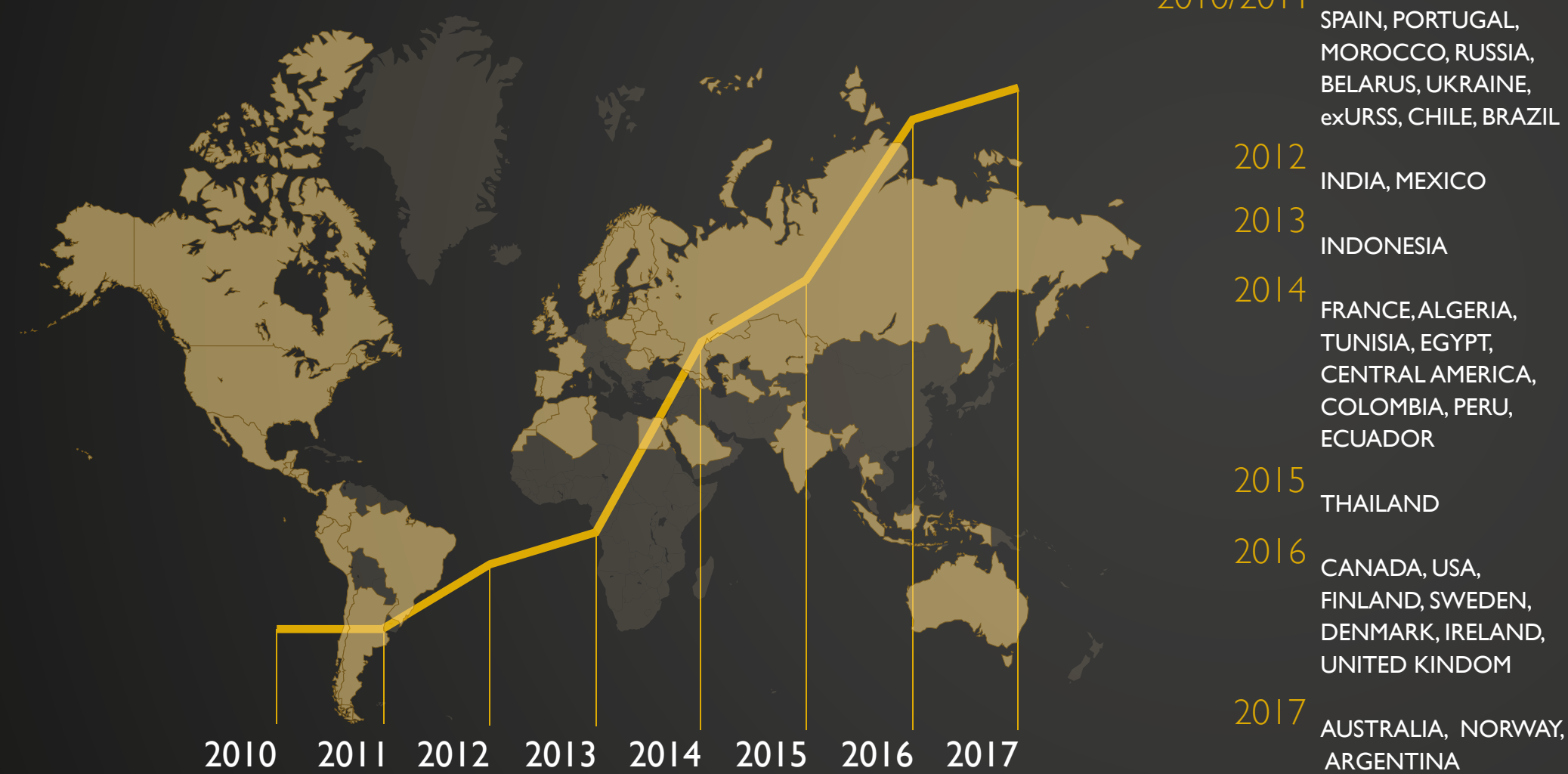
OUR INTERNATIONAL NETWORK OF AGENTS AND SUPPLY CHAIN ENABLES US TO GIVE QUICK RESPONSES AND COMPETITIVE SERVICES WORLDWIDE



INDEX

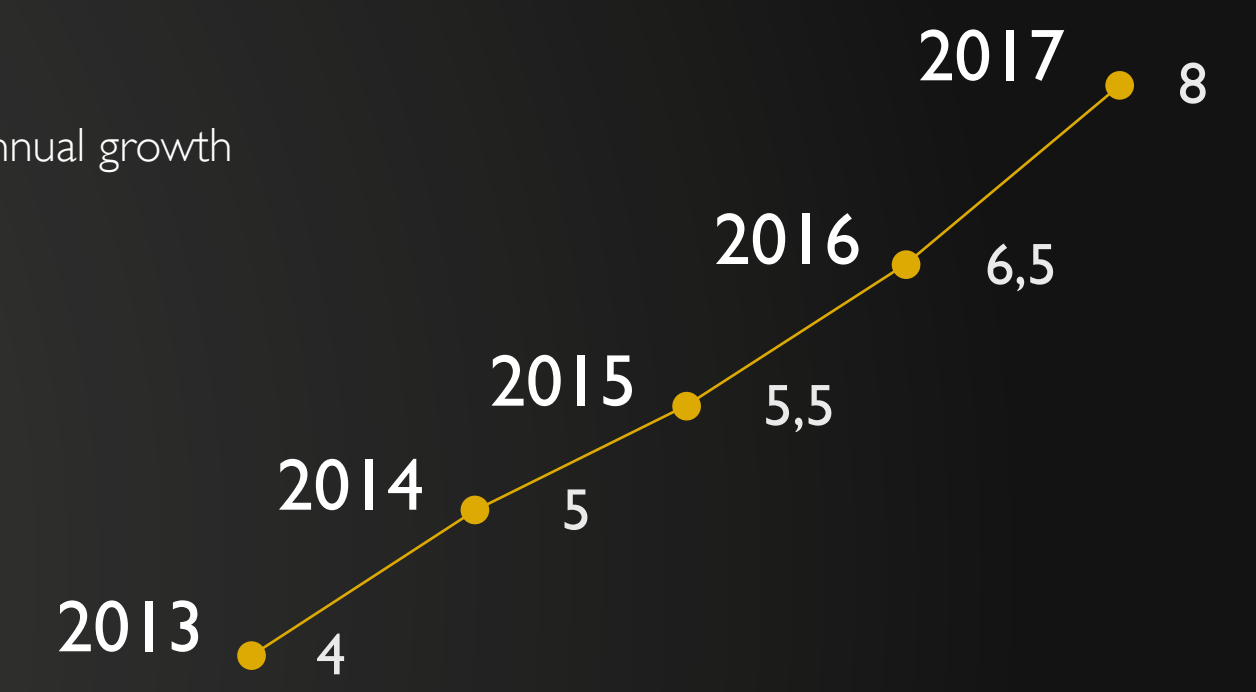
1. Definition of our business
2. Services
3. Global response
4. Key figures
5. An adaptative performance
6. Featured projects
7. Location and contact

OF PROJECTS



SALES

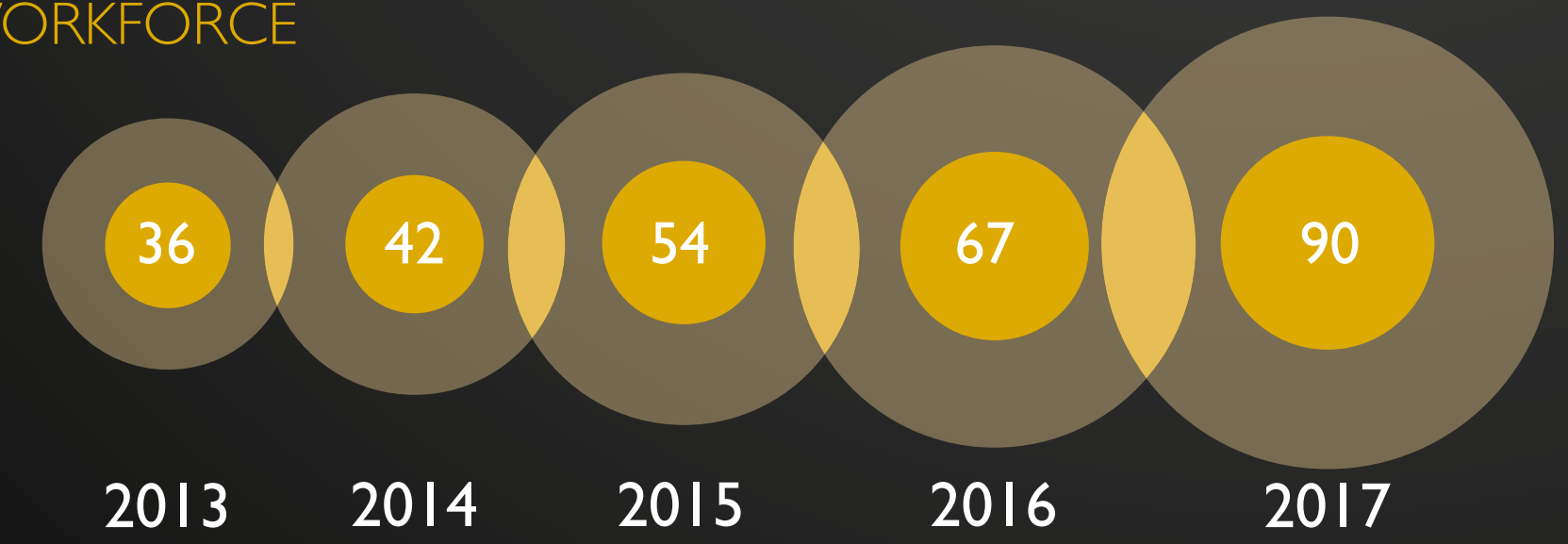
Average annual growth
16%



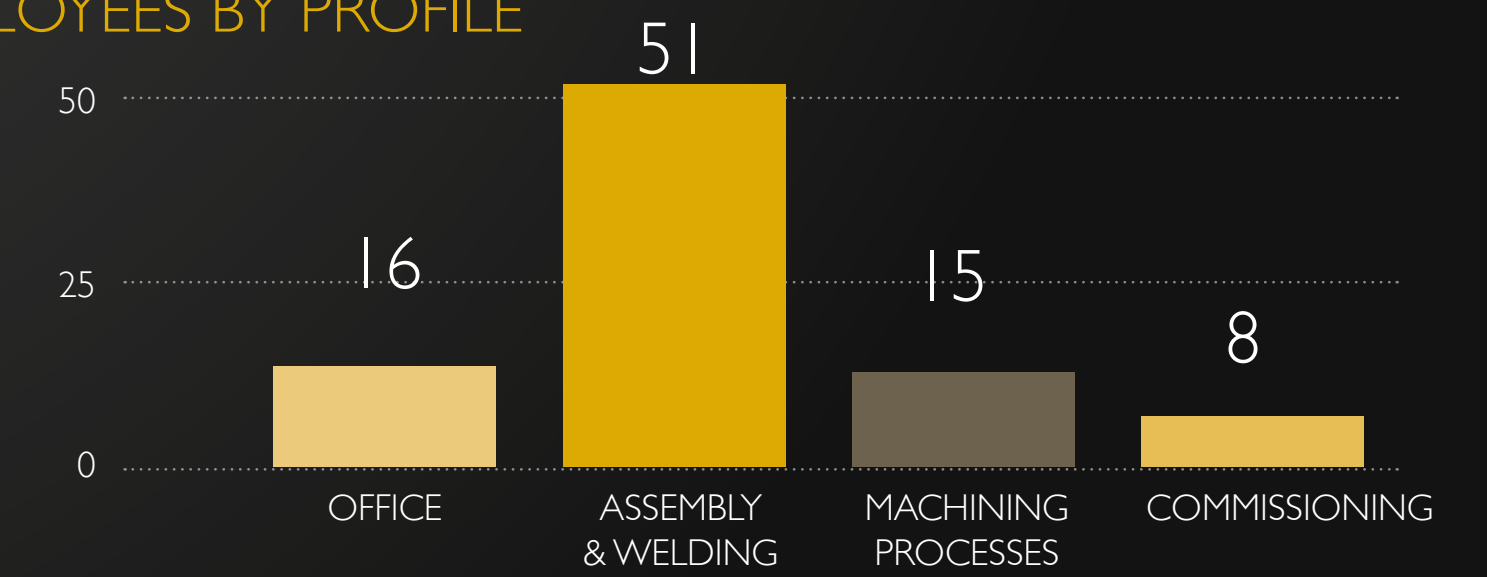
BROAD INTERNATIONAL EXPERIENCE



WORKFORCE



EMPLOYEES BY PROFILE



WE OFFER OUR CLIENTS ANY RANGE OF SERVICE STARTING FROM PRELIMINARY MOULD DESIGN TO COMPREHENSIVE TURN KEY PROJECTS FOR PRECAST MANUFACTURING PLANTS INCLUDING COMMISSIONING AND PERSONNEL TRAINING.

INDEX

1. Definition of our business
2. Services
3. Global response
4. Key figures
5. **An adaptative performance**
6. Featured projects
7. Location and contact



FIXED & MOBILE MOULDING SYSTEMS
MOULDS FOR STRUCTURAL AND ENCLOSURE ELEMENTS
3D AND BOX CULVERT MOULDS
SPECIAL MOULDS FOR HIGHWAYS AND DRAINAGE
EQUIPMENT & ACCESSORIES FOR MANUFACTURING SUPPORT
FULLY-EQUIPPED PRECAST CONCRETE PLANTS

INDEX

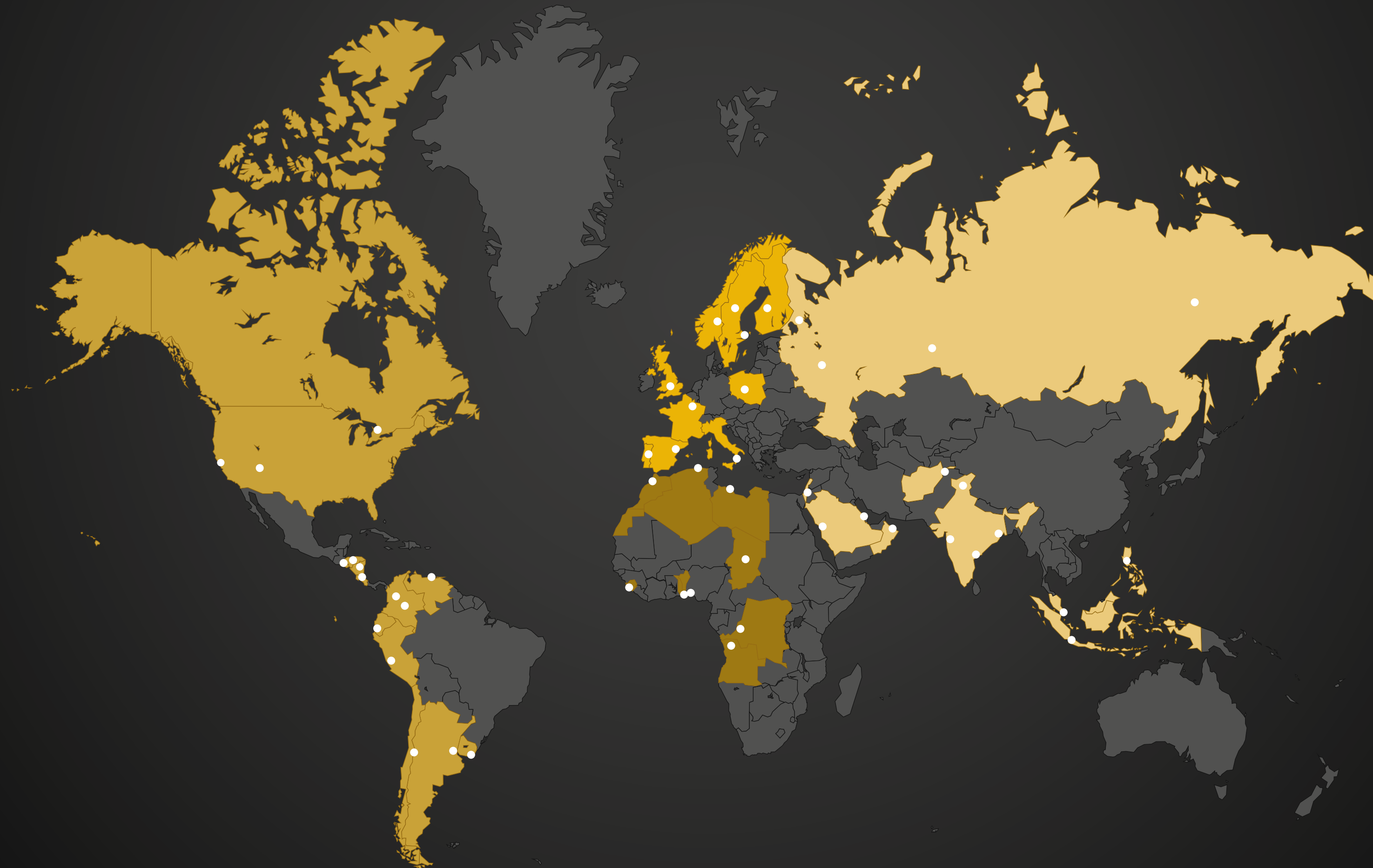
1. Definition of our business
2. Services
3. Global response
4. Key figures
5. An adaptative performance
6. **Featured projects**
7. Location and contact

FEATURED PROJECTS

INDEX

- 1. Definition of our business
- 2. Services
- 3. Global response
- 4. Key figures
- 5. An adaptative performance
- 6. **Featured projects**
- 7. Location and contact

WE EXECUTED MORE THAN 100 COMMISSIONING DIVIDED OVER MORE THAN 40 COUNTRIES AND IN 4 DIFFERENT CONTINENTS



180° TURNING MACHINES FOR 3D MODULES

2018 Singapore
Singapore



INDEX

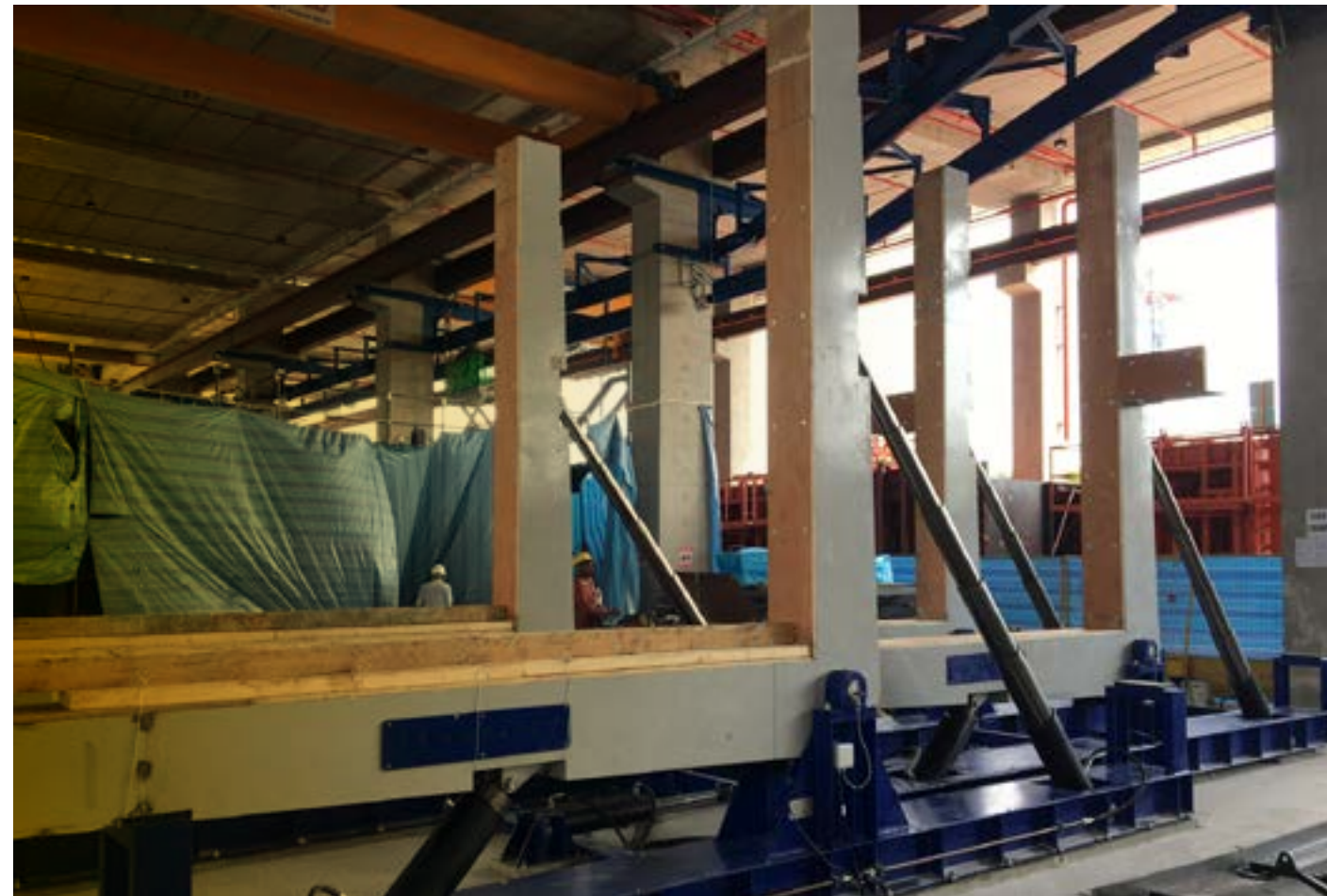
1. Definition of our business
2. Services
3. Global response
4. Key figures
5. An adaptative performance
6. Featured projects
7. Location and contact

4 hydraulic turning machines for 3D elements up to 40 TN weight.

Designed to meet the minimum and maximum dimensions of the 3D concrete modules.

Equipped with all visual and acoustic safety systems.

All movements are controlled by a hydraulic pump unit with a control board with all necessary limit switches.



Precast
Concrete
Equipment

MT20 DRY CAST BOX CULVERT EQUIPMENT

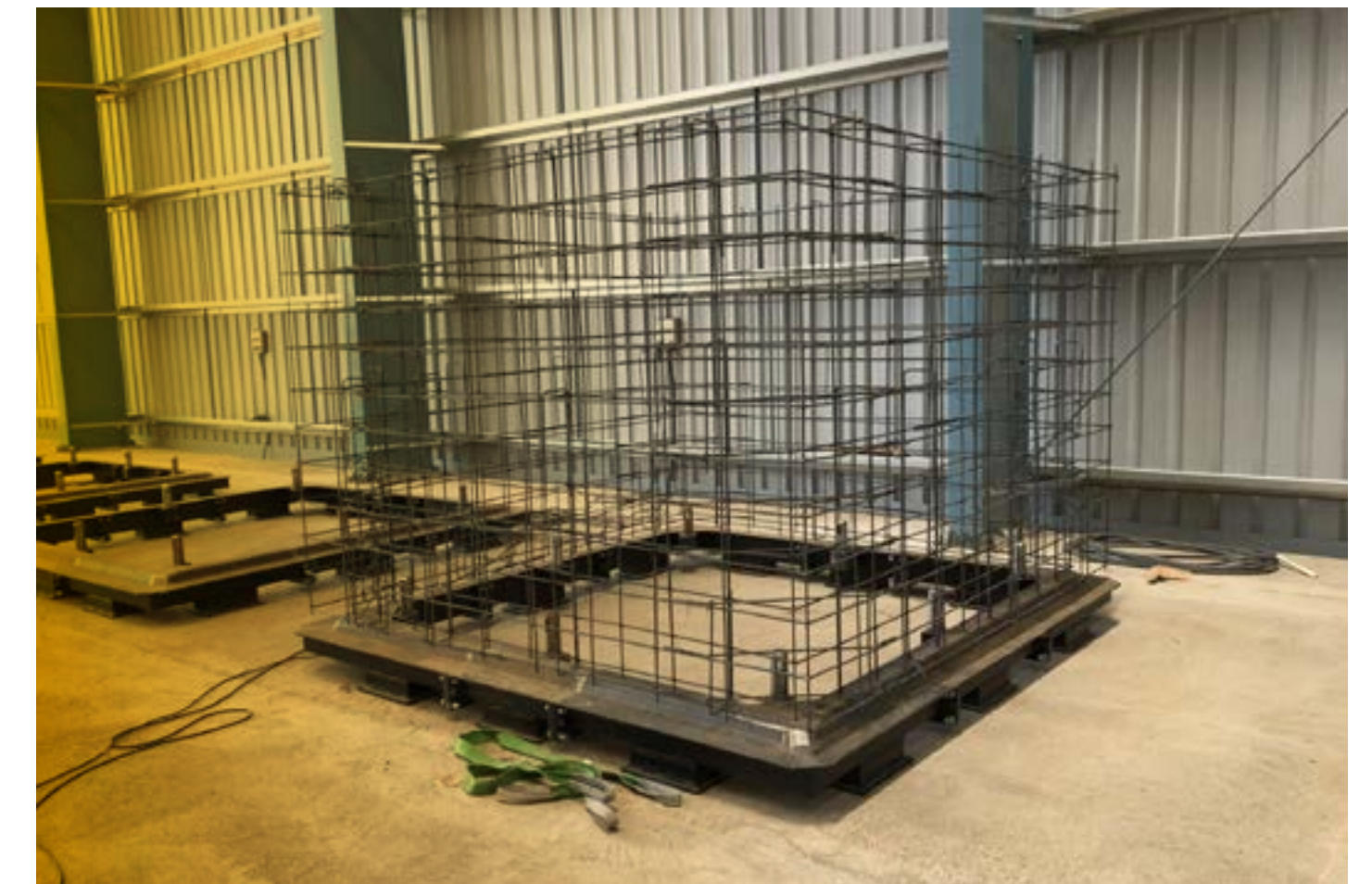
2018 India
Delhi



MT20 mould for making dry cast box culverts with capacity for 11 different sizes ranging from 1,8 (span) x 1,5 meters (height) up to 3 (span) x 3 meters (height).

All with a length of 2 meters.

Productivity of 25 culverts in 2 work shifts.



INDEX

1. Definition of our business
2. Services
3. Global response
4. Key figures
5. An adaptative performance
6. Featured projects
7. Location and contact

Precast
Concrete
Equipment

PLANT FOR THE PRODUCTION OF PRECAST POWER TRANSFORMATION STATIONS

2018 Morocco
Casablanca



Turn-key project.
4 tilting tables for the production of the wall panels.
Table for the production of the roof slab.
Book type table for the production of the floor slab.



Precast
Concrete
Equipment

CARROUSEL LINE FOR HOLLOW CORE COLUMNS

2018 India
Taloja



Carrousel for the production of 250 hollow core columns per day. Columns of length from 2.6 to 3.6 m (8,6 x 12 ft) and width between 25 and 90cm (0,98 x 2,12 ft) (1 to 3 cores).
Totally automated line consisting of 56 pallets including hydraulic system for the positioning of side shuttering and inserting and extraction of the cores. The line features double station for pouring, vibrating and screeding.



Precast
Concrete
Equipment

CARROUSEL LINE FOR HOLLOW CORE COLUMNS

INDEX

1. Definition of our business
2. Services
3. Global response
4. Key figures
5. An adaptative performance
6. Featured projects
7. Location and contact



Precast
Concrete
Equipment

INDEX

- 1. Definition of our business
- 2. Services
- 3. Global response
- 4. Key figures
- 5. An adaptative performance
- 6. Featured projects
- 7. Location and contact

2018 Colombia Medellín



- 2 complete beds with stressing heads of 1000 TN (2204 KIPS).
- 2 "1" beam moulds of 45 m (146,7 ft) length and height of 2,20 m (7,26 ft).
- Fixed table for preslabs of 70 m (230 ft).
- Fixed table for the production of retaining walls of 15 x 2.5 m (49,2 x 8,2 ft).
- 2 "giraffe" units for transport and pouring of the concrete.
- MT 20 equipment for the production of dry cast box culverts of sizes 1 x 1 up to 3 x 4 m (9,1 x 13,1 ft).



Precast
Concrete
Equipment

COMPLETE FACTORY IN MEDELLÍN FOR THE PRODUCTION OF PUBLIC WORKS ELEMENTS.

INDEX

1. Definition of our business
2. Services
3. Global response
4. Key figures
5. An adaptative performance
6. Featured projects
7. Location and contact



Precast
Concrete
Equipment

INDEX

- 1. Definition of our business
- 2. Services
- 3. Global response
- 4. Key figures
- 5. An adaptative performance
- 6. Featured projects
- 7. Location and contact

2017 USA
California



2 pouring buckets with electric vibrator and a motorized ruler. Controlled by remote control. Turning device with capacity up to 30 Tons (66 KIPS) for safely turning box culverts 90°.

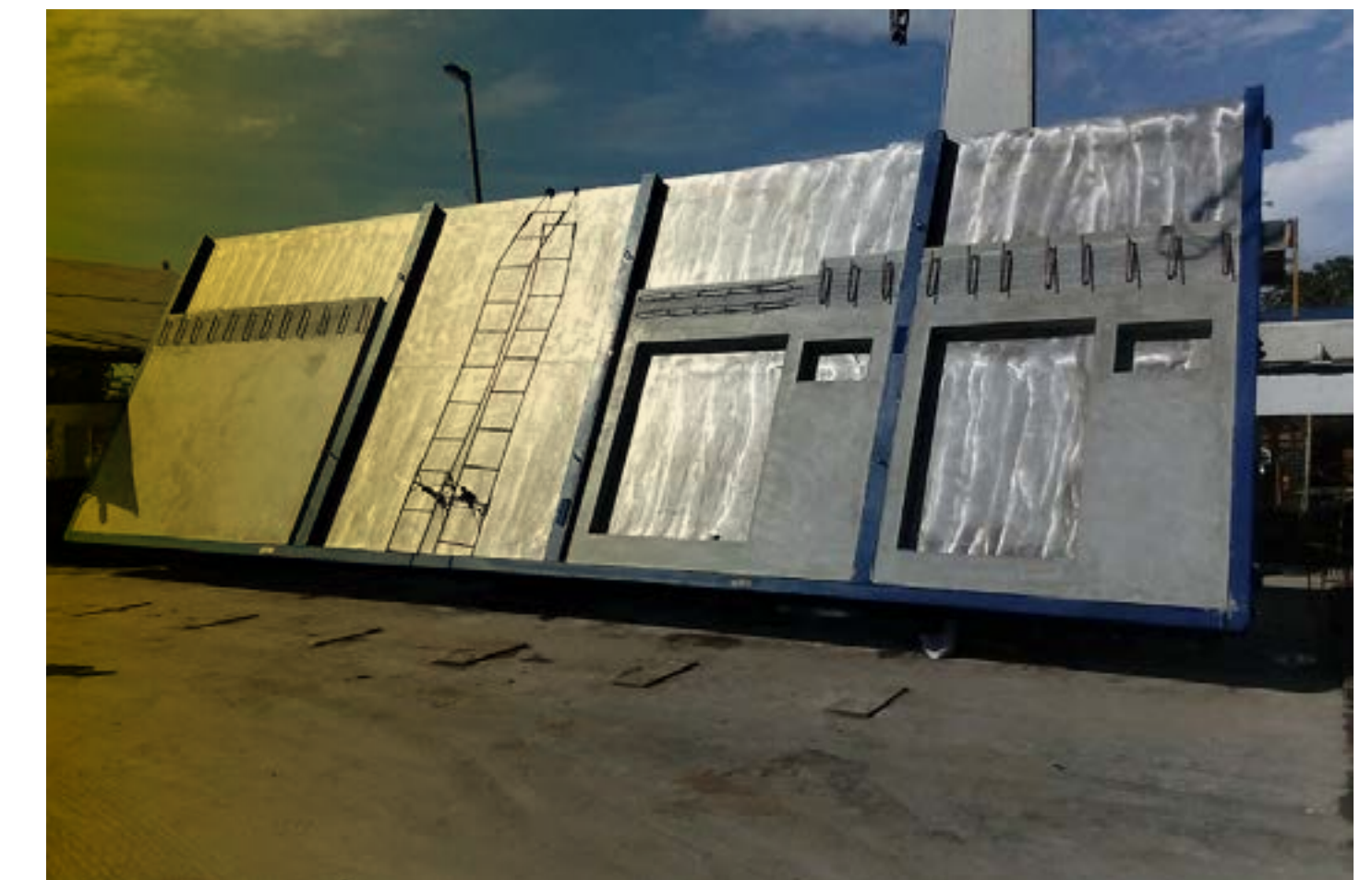
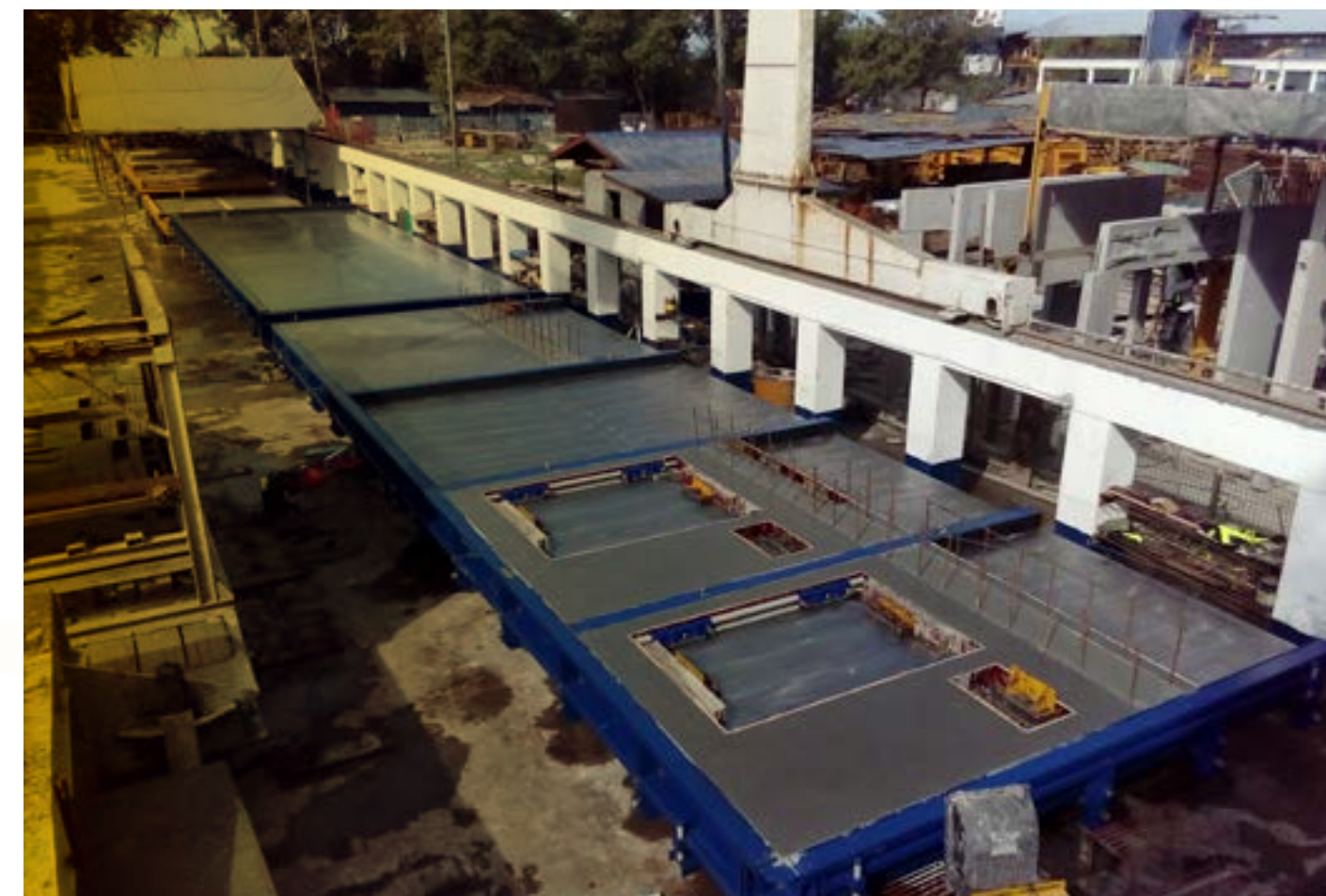


TILTING TABLES AND SHUTTERING FORMWORKS

2017 Philippines
Manila



2 tilting tables with dimensions of 11,8 x 4 m (38,8 x 13,14 ft) for manufacturing façade panels. Lower shuttering band with height adjustment. Magnetic shuttering formworks. Magnetic frame system for plywood shuttering.



SELF-SUPPORTING SYSTEM FOR BRIDGE GIRDERS

2017 Honduras
Tegucigalpa



Self-supporting metallic bench with capacity of 800 TN (1,760 KIPS) and length of 70 m (230 ft).
25-meter (82 ft) modular mould for the production of "I" girder.



INDEX

1. Definition of our business
2. Services
3. Global response
4. Key figures
5. An adaptative performance
6. Featured projects
7. Location and contact

Precast
Concrete
Equipment

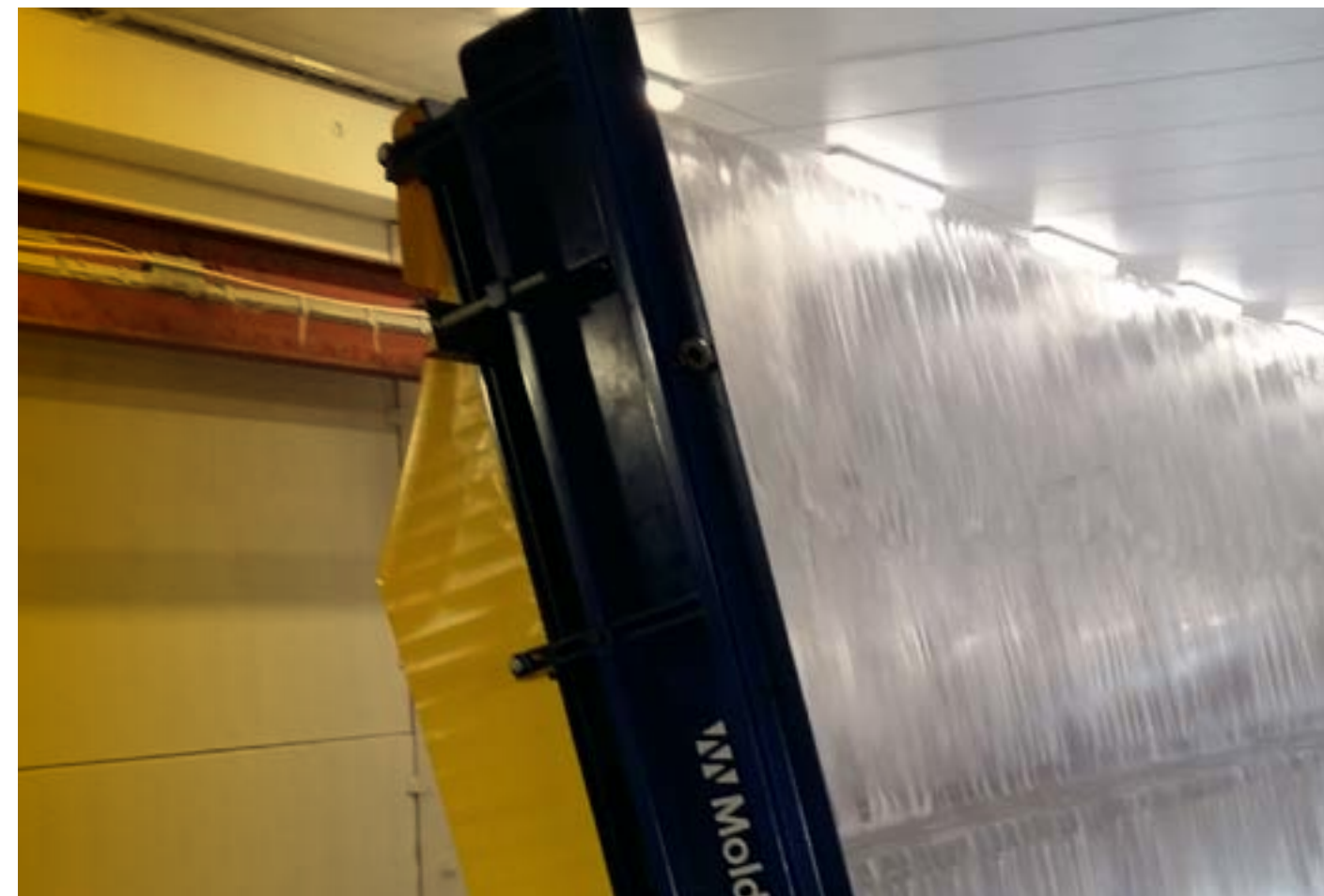
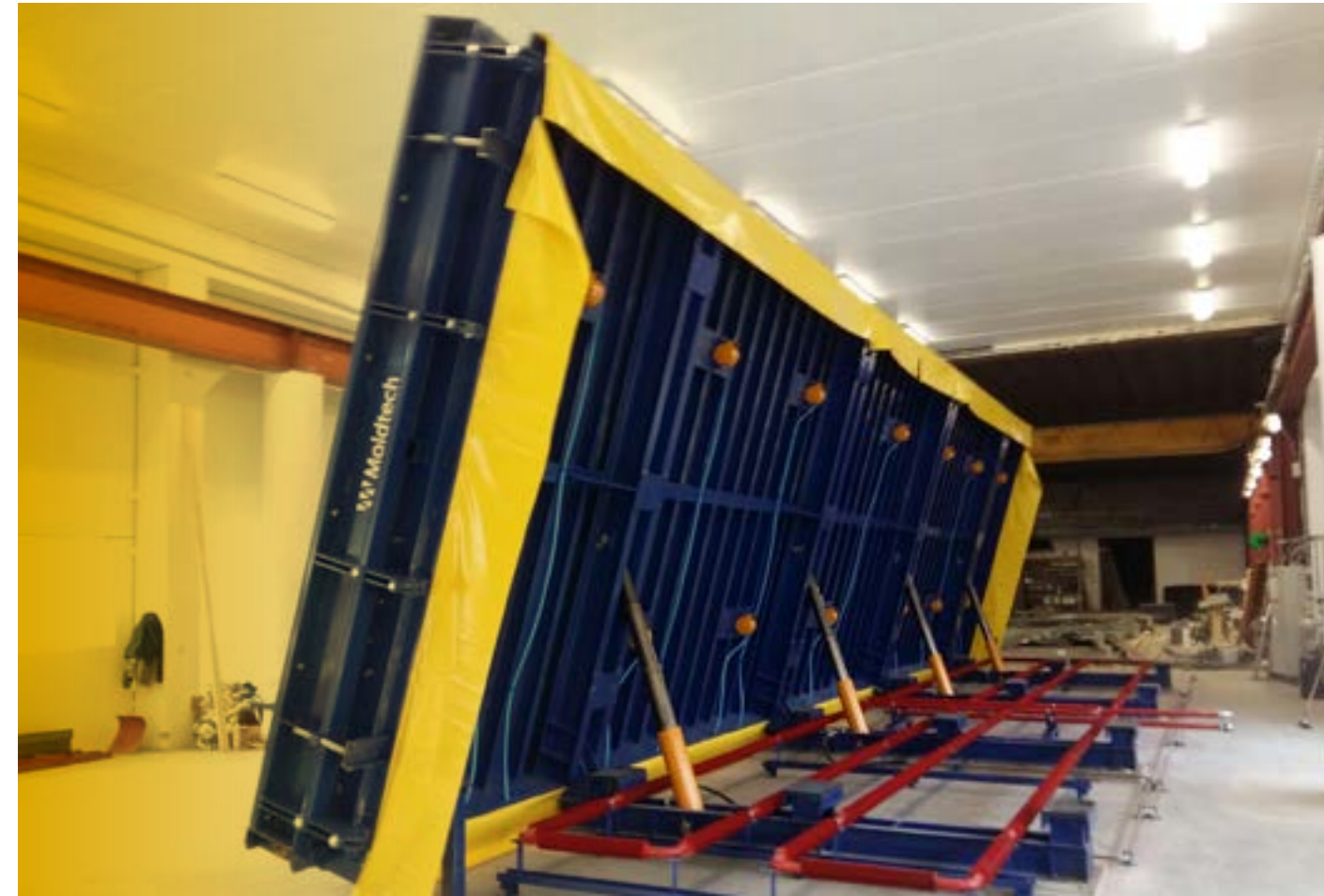
TILTING TABLE FOR CLOSURE PANELS

2017 Norway
Dokka



Tilting table of 16x4.5 m (52.4x14.7 ft) with automatic vibration and heating.

Set of frames with magnetic fixation for wood formwork.



INDEX

1. Definition of our business
2. Services
3. Global response
4. Key figures
5. An adaptative performance
6. Featured projects
7. Location and contact

Precast
Concrete
Equipment

AUTOMATIC MACHINES FOR CHAIN PRODUCTION OF PRECAST PANELS

2017 **Argentina**
Rosario



Automatic machines for filling and cleaning of tables and final product storage.
Tilting table of 42x3 m (137.7x9.8 ft).



INDEX

1. Definition of our business
2. Services
3. Global response
4. Key figures
5. An adaptative performance
6. Featured projects
7. Location and contact

Precast
Concrete
Equipment

INDEX

1. Definition of our business
2. Services
3. Global response
4. Key figures
5. An adaptative performance
6. Featured projects
7. Location and contact

MOULD FOR TT SLABS

2017 **Canada**
Toronto



Self-stressing mould of 134 m (440 ft) in length and 4.3 m (14 ft) in width for TT slabs. Tensioning capacity of 450 TN (992 KIPS).



Precast
Concrete
Equipment

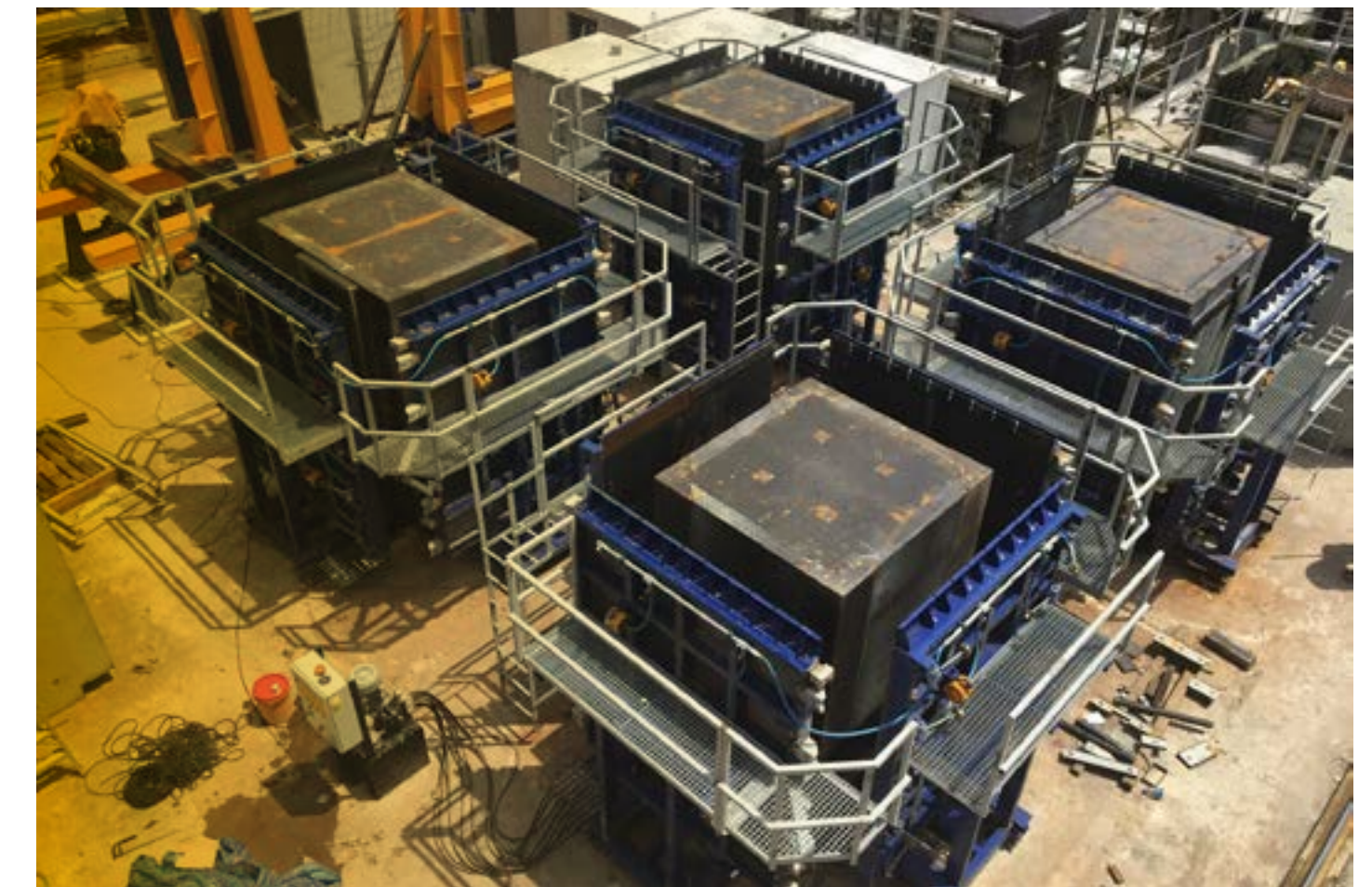
3D MOULDS FOR PRECAST BATHROOMS

2017 Singapore
Singapore



4 hydraulic moulds for the production of 3D prefabricated bathroom units of sizes 1.75x1.85 m (5.7x6 ft) inner dimensions and 2.3 m (7.5 ft) in height.

2 turning devices to turn the elements 180° with total capacity of 40 Tn (80 KIPS).



INDEX

1. Definition of our business
2. Services
3. Global response
4. Key figures
5. An adaptative performance
6. Featured projects
7. Location and contact

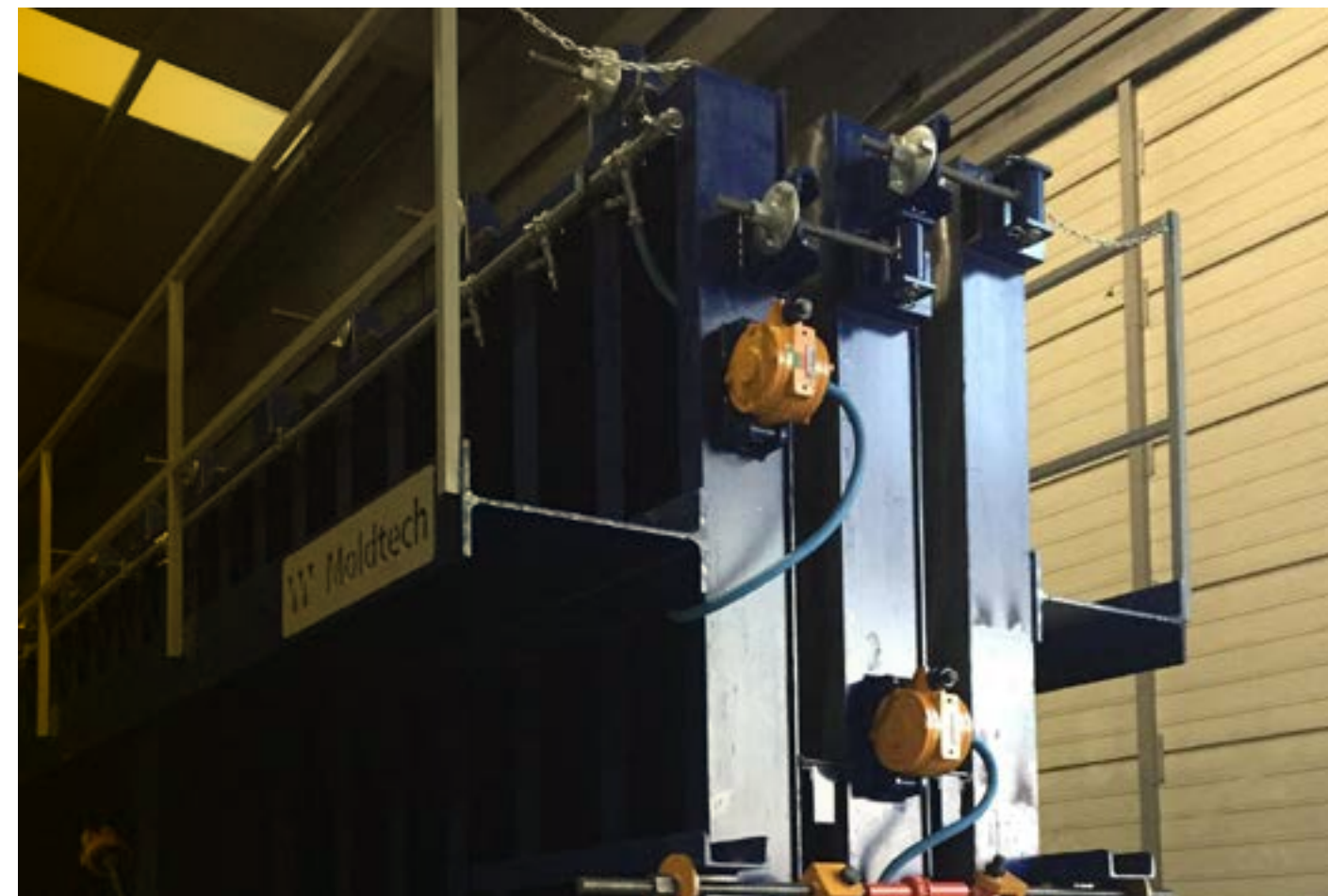
Precast
Concrete
Equipment

ARCHITECTURAL PANELS IN VERTICAL BATTERY MOULD

2016 Portugal
Aveiro



Vertical battery mould with 2 casting cells, for the production of architectural panels max 12x2.5 m (39.3x8.2 ft).



INDEX

1. Definition of our business
2. Services
3. Global response
4. Key figures
5. An adaptative performance
6. Featured projects
7. Location and contact

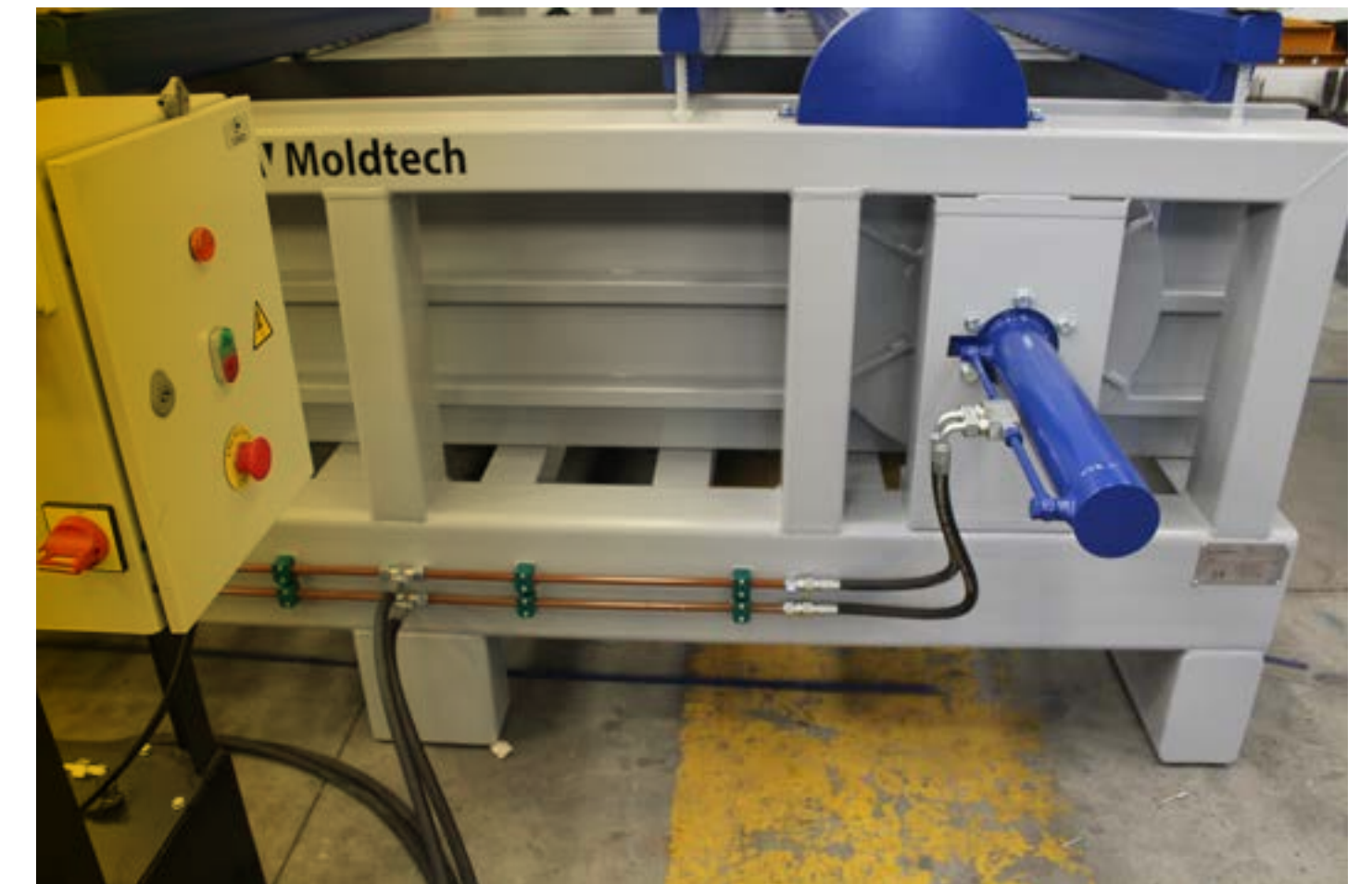
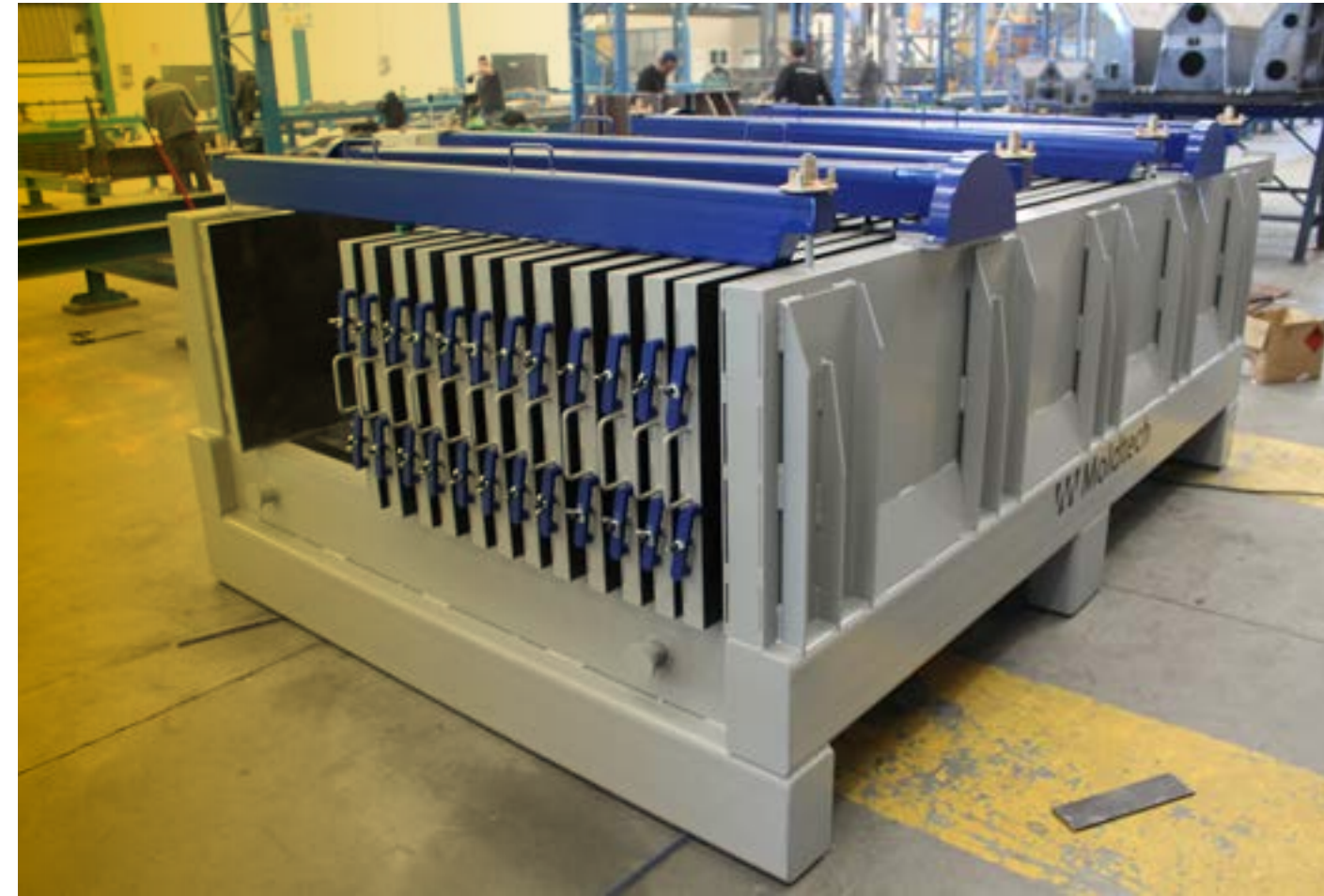
Precast
Concrete
Equipment

BATTERY MOULDS FOR THE PRODUCTION OF LIGHTWEIGHT PANELS

2016 Portugal
Gondemaria



6 moulds with 13 casting cells in battery for the production of lightweight panels of dimensions 3x0.65 m (9.8x2.1 ft). Hydraulic closing of the mould.



INDEX

1. Definition of our business
2. Services
3. Global response
4. Key figures
5. An adaptative performance
6. Featured projects
7. Location and contact

Precast
Concrete
Equipment

FACTORY FOR PRE-STRESSED ELEMENTS

2016 Malta
Mqabba



Casting bed of 65 m (213 ft) in length and 1.2 m (3.9 ft) in width.

Tensioning heads for 600 TN (1322.7 KIPS) with self-stressing structure of 65 m (213 ft) in length.

Mould sides for casting of Y girder of 1 m in height and 32 m (105 ft) in length.

Mould sides for casting of TL girder of 1 m (3.2 ft) in height and 21.5 m (70.5 ft) in length.

Mould sides for casting of H girder of 1 m (3.2 ft) in height and 21.5 m (70.5 ft) in length, with or without side corbels.

Versatile column mould of 25 m (82 ft) in length. Hydraulic opening and closing of the mould.

Hydraulic adjusting of the column section, from 0.5x0.4 m (1.64x1.3 ft) up to 0.9x0.7 m (2.95x2.3 ft).

3 sets of corbels on 4 sides.



INDEX

1. Definition of our business
2. Services
3. Global response
4. Key figures
5. An adaptative performance
6. Featured projects
7. Location and contact

Precast
Concrete
Equipment

COMPLETE FACTORY FOR INDUSTRIAL BUILDINGS

2016 Libya
Tripoli



INDEX

1. Definition of our business
2. Services
3. Global response
4. Key figures
5. An adaptative performance
6. Featured projects
7. Location and contact

2 moulds for I beams 60/81//101 cm (24/32/40 inches) and 25 m (32.8 ft) length.

Mould for TI/TL beams (h) 119 cm (47 inches), 25 m (82 ft) length.

Double column mould 40/51x40/51/61 cm (16/20x16/20/24 inches), 35.4 m (115 ft) length.

Self-supporting mould for TT slabs 60 m (196 ft) length.

2 tilting tables of 35.4x3.5 m (117x11.4ft) and 47.2 x2.5 m (156x8.2 ft).

Fixed battery mould 11 m (36 ft) for 8 beams T-35.



Precast
Concrete
Equipment

COMPLETE FACTORY FOR INDUSTRIAL BUILDINGS

INDEX

1. Definition of our business
2. Services
3. Global response
4. Key figures
5. An adaptative performance
6. Featured projects
7. Location and contact



Precast
Concrete
Equipment

INDEX

- 1. Definition of our business
- 2. Services
- 3. Global response
- 4. Key figures
- 5. An adaptative performance
- 6. Featured projects
- 7. Location and contact

PRISON CELLS

2016 Uruguay
Montevideo



Custom-made moulds for prison cells
up to 11.6 x 6 m (38 ft x 20 ft).

4 cells.

Weight of casted element
up to 60 MT (132 KIPS).



Precast
Concrete
Equipment

PRISON CELLS

INDEX

1. Definition of our business
2. Services
3. Global response
4. Key figures
5. An adaptative performance
6. Featured projects
7. Location and contact



Precast
Concrete
Equipment

INDEX

- 1. Definition of our business
- 2. Services
- 3. Global response
- 4. Key figures
- 5. An adaptative performance
- 6. Featured projects
- 7. Location and contact

FIXED TABLES

2015 **Algeria**
El-Harrach



6 fixed tables of 23.6x3.2 m (77.4 ft x 10.5 ft).

6 fixed tables of 35.4x3.2 m (116 ft x 10.5 ft).

Finned heating pipes with tarpaulin cover.



EQUIPMENT FOR THE PRODUCTION OF BOX CULVERTS

2015 **France**
Nevers



Wet cast system:
sizes from 2.5x2.5 m to 6x5.5 m
(8.2x8.2 ft to 19.6x18 ft).
H= 2 m (6.5 ft).

MT20 system for dry cast box culvert production:
from 1.5x1.5 m to 3x3 m (4.9x4.9 ft to 9.8x9.8 ft).

H= 2 m (6.5 ft). Adjustable wall thickness.

2 pouring buckets with endless screws.



SIDES AND MOULDING FRAME FOR PRE-STRESSED 'OMEGA' BEAM

2015 Spain
Teruel



2 sides of 66 m (216.5 ft) length
with adjustable height from 385 mm to 900 mm
(15 inches to 35 inches).

Moulding frame of 66 m (216 ft) length.
Supporting bridges for moulding frame.

Stressing heads.



INDEX

1. Definition of our business
2. Services
3. Global response
4. Key figures
5. An adaptative performance
6. Featured projects
7. Location and contact

Precast
Concrete
Equipment

COMPLETE FACTORY FOR THE PRODUCTION OF (PRE-STRESSED) CONCRETE ELEMENTS FOR INDUSTRIAL AND COMERCIAL BUILDINGS AND BRIDGES

2014 Honduras
2015 Tegucigalpa



Universal casting beds and mould sides for the production of "ASSHTO type I beams with stressing heads of 600 TN (1322 KIPS).

Double column moulds. Moulds of main beams of 16 m (5.2 ft). Self-stressing double T mould of 36 m (118 ft) and width 2.4 m (7.9 ft).

Analysis of the production process and design of factory lay-out.



INDEX

1. Definition of our business
2. Services
3. Global response
4. Key figures
5. An adaptative performance
6. Featured projects
7. Location and contact

Precast
Concrete
Equipment

INDEX

- 1. Definition of our business
- 2. Services
- 3. Global response
- 4. Key figures
- 5. An adaptative performance
- 6. Featured projects
- 7. Location and contact

2014 Morocco

Ben Slimame



4 tilting moulds of length 53,2 m for the production of L-shaped wall segments for land retaining.

Wall dimensions of 3 m in height and 2,2 m in bases.

Tilting and opening of the mould are made by means of hydraulic system with electrical control panel.

Moulds equipped with working platform, heating, external vibration and hydraulic expulsion of the pieces.



EQUIPMENT FOR THE PRODUCTION OF PRECAST PANELS, FOR INDUSTRIAL AND RESIDENTIAL PROJECTS

2014 Russia

Kaluga



16 tilting tables of 12.5x3.8 m (41x12.5 ft)
Automatic concrete distribution system.

Layout design.

Optimization of production process.



INSTALATION 2,000 METERS OF HYDRAULIC BEAM MOULDS FOR THE PRODUCTION OF BEAMS FOR RESIDENTIAL PROJECTS

2013 India
Shirke



Production capacity:
30,000 apartments in 2 years.

Design of Factory lay-out.

Custom made design of moulds and accessories
(notch boxes and corbels).

Modular mould for elevator-shaft.

Planning of logistics process: design, production,
transport, commissioning in 5 months.

On site production plant.



INDEX

1. Definition of our business
2. Services
3. Global response
4. Key figures
5. An adaptative performance
6. Featured projects
7. Location and contact

Precast
Concrete
Equipment

MANUFACTURE AND INSTALLATION OF DOUBLE BOOK MOULDS AND TILTING TABLES FOR SPECIAL PANELS

2013 Israel
Hertsliya



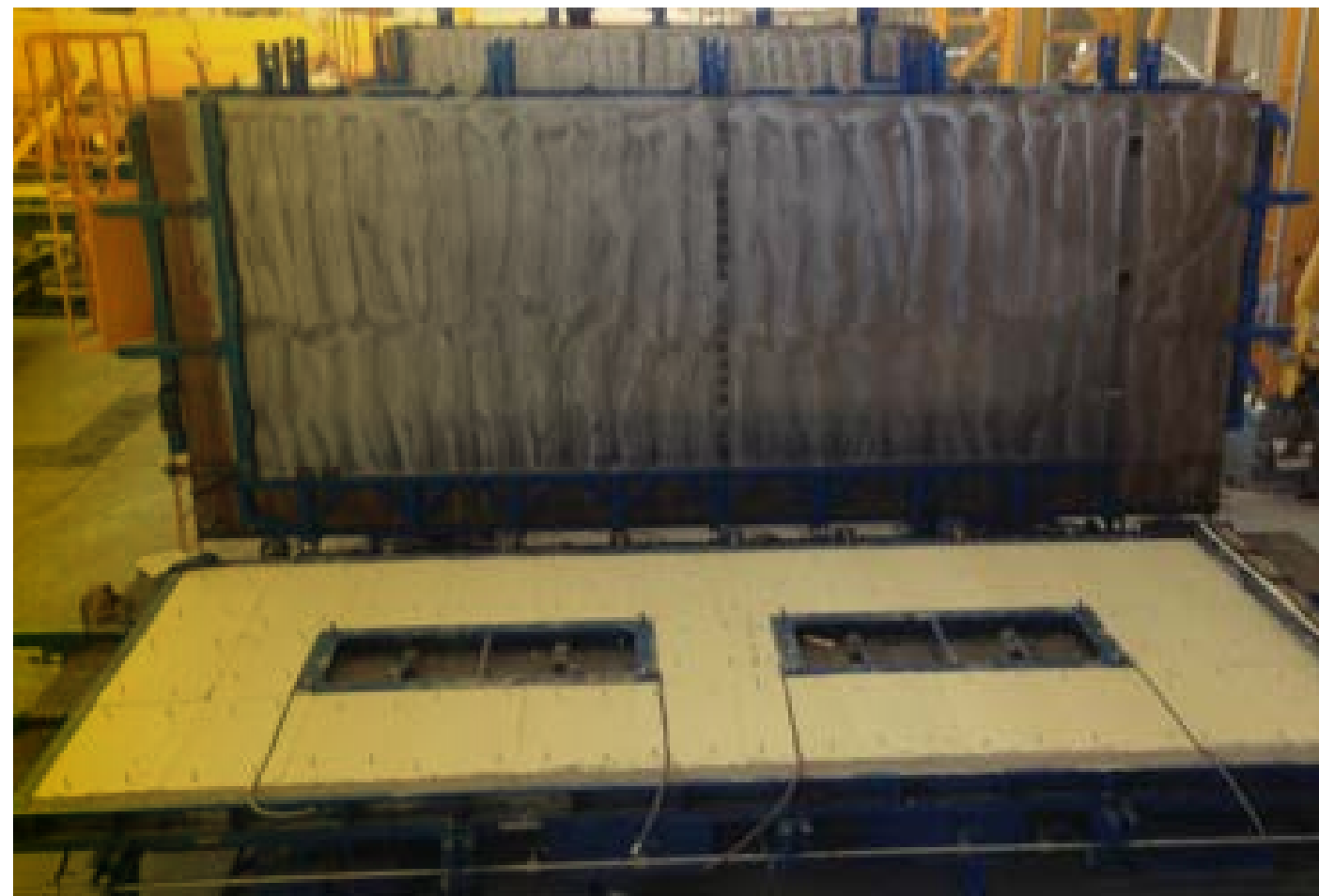
4 double book moulds for casting panels up to 28 cm (11 inches) consisting of natural stone, concrete layer, insulation material and concrete layer with smooth finish.

3 tilting tables 12x4.5 m (39.4x14.8 ft), with special formwork for protruding bars.

1 fixed table for floor slabs.

Tailor-made manufactured frequency converter for total control of electric vibration.

Lay-out design and commissioning.



INDEX

1. Definition of our business
2. Services
3. Global response
4. Key figures
5. An adaptative performance
6. Featured projects
7. Location and contact

Precast
Concrete
Equipment

TURN-KEY PROJECT FOR PRECAST PLANT FOR THE CONSTRUCTION OF RESIDENTIAL HOUSING UNITS

2012 **Venezuela**

Santa Teresa de Tuy



Factory capacity: yearly output of 3,000 housing units of 60 sqm (645 sqft) average size.

Equipment supplied: 21 tilting tables for wall panels of 15.5x3 m (50.9x9.8 ft), 3 fixed tables 60x2.25 m (197x7.4 ft) for floor slabs, staircase moulds, equipment for lifting, transportation and storage of finished panels, compressed air circuit, lifting equipment.

Factory lay out design, productivity and feasibility calculations.

Commissioning, test production and training of local staff.



INDEX

1. Definition of our business
2. Services
3. Global response
4. Key figures
5. An adaptative performance
6. Featured projects
7. Location and contact

Precast
Concrete
Equipment



Thank you

info@moldtechsl.es

www.moldtechsl.es



This document is confidential
©2018 Moldtech S.L.
All Rights Reserved