

## PRECAST CONCRETE AND SOCIAL HOUSING

*Example of a project in South America*

---



---

**PRECAST CONCRETE & SOCIAL HOUSING**

---



***PROJECT REFERENCES:***

- **Project:** 3.500 social housing units “Ciudad Bicentenario”
- **Location:** Santa Teresa del Tuy – Estado de Miranda, Venezuela
- **Contractor:** Grupo Essentium Venezuela CA

---

PRECAST CONCRETE & SOCIAL HOUSING

---



---

## PRECAST CONCRETE & SOCIAL HOUSING

---

### ***CHALLENGES OF THE PROJECT:***

- Great housing deficit.
- Low incomes, cost reduction.
- Demand for quality standards and good construction quaility.
- Reduction of delivery times, construction leadtimes.
- Respect for the environment.
- Integration of local unskilled and unemployed people and local resources.
- New construction techniques to achieve an integral solution for the housing problems.



---

## PRECAST CONCRETE & SOCIAL HOUSING

---

Poor housing standards and short time to improve it. Precast is the only solution to mass production and construction of a good amount of social housing in emerging economies.



---

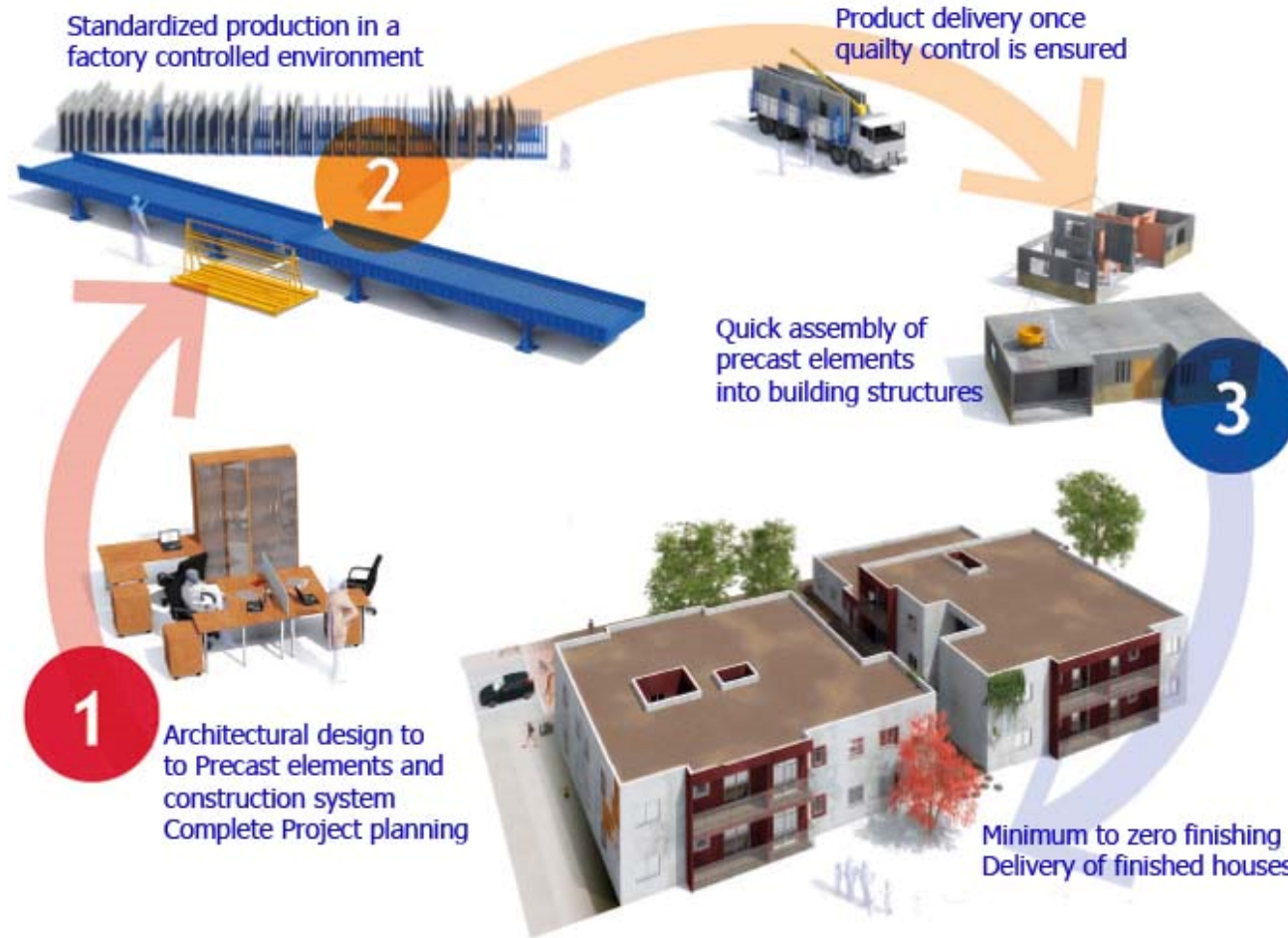
PRECAST CONCRETE & SOCIAL HOUSING

---

Use of local resources, materials (concrete) and persons (local workers).  
Unskilled local workforce and integration of collectivities without access to employment.



PRECAST CONCRETE & SOCIAL HOUSING





PRECAST CONCRETE & SOCIAL HOUSING

Standardized production. No need for skilled workers.  
Repetitive easy tasks and efficient and highly productive equipment.  
Controlled environment. Minimum material waste.  
High integrated quality control. Minimum mistakes.  
All panels are delivered for installation in perfect conditions.  
Integration of all electrical and plumbing installations

....





---

## PRECAST CONCRETE & SOCIAL HOUSING

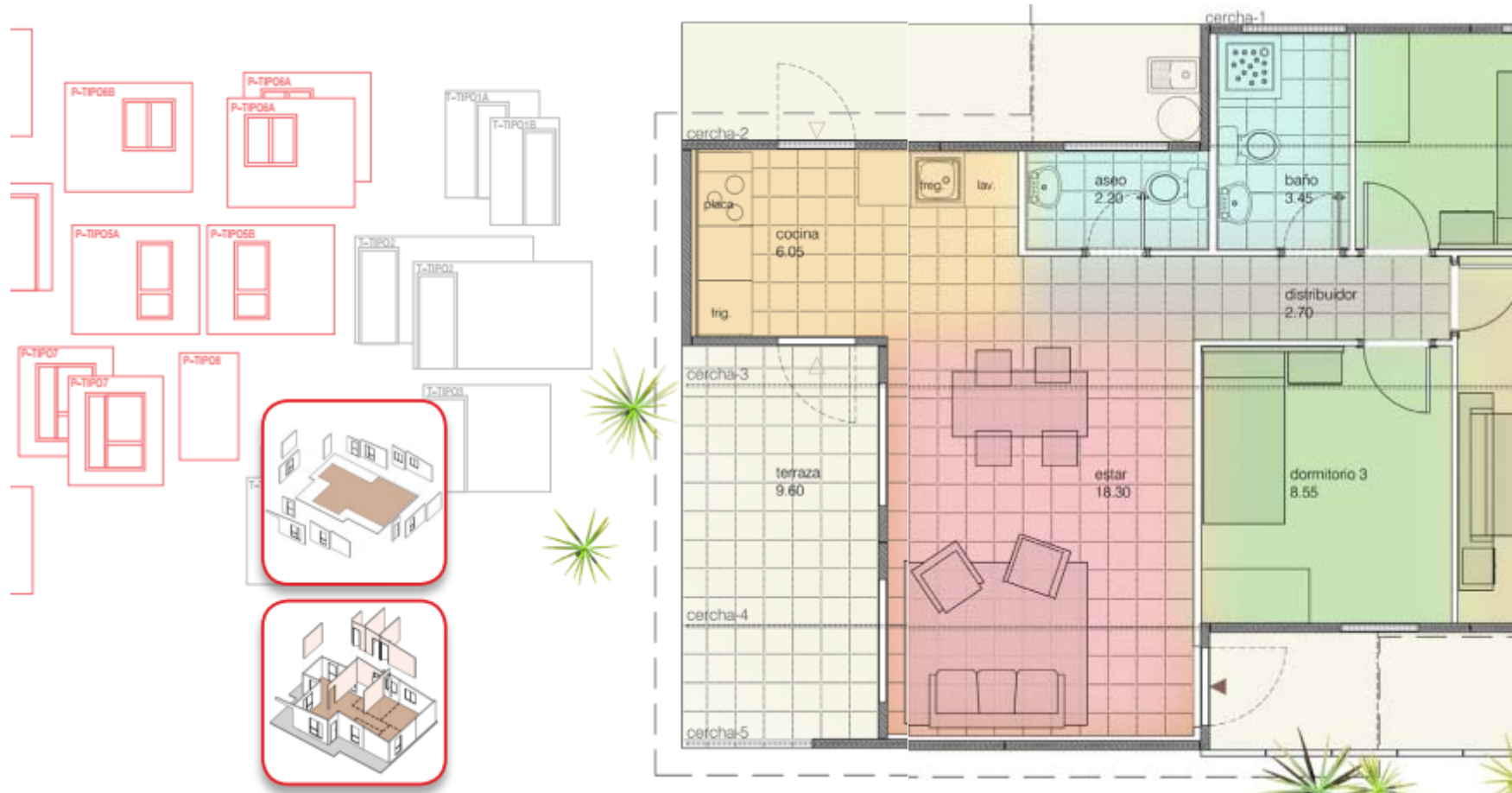
---

Integrated Project planning from the design of the manufacturing plant to production of precast elements and to final installation.

All stages of the process can be planned and delivery times can be scheduled long ahead.



PRECAST CONCRETE & SOCIAL HOUSING



---

PRECAST CONCRETE TECHNOLOGY



---

## PRECAST CONCRETE & SOCIAL HOUSING

---



---

Social Housing in Philippines





---

PRECAST CONCRETE & SOCIAL HOUSING

---



---

PRECAST CONCRETE & SOCIAL HOUSING

---





---

## PRECAST CONCRETE & SOCIAL HOUSING

---

A high level of engineering, for manufacturing of precast panels and its on-site installation, allows high quality houses which are produced in series, achieving reduced costs and execution times.





---

**PRECAST CONCRETE & SOCIAL HOUSING**

---

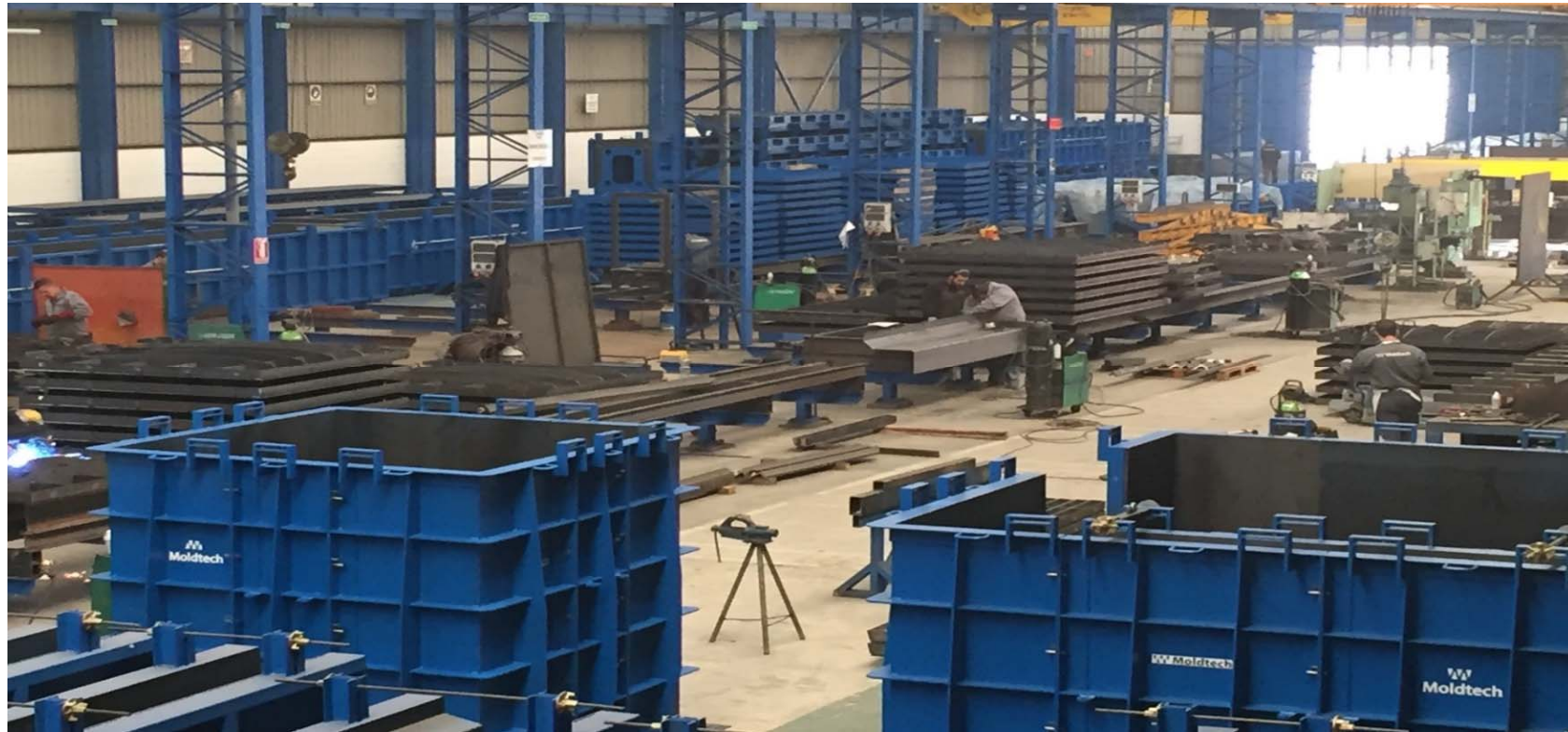


---

## PRECAST CONCRETE & SOCIAL HOUSING

---

**MOLDTECH** has participated hand by hand with the client in all stages of the project from design to development and construction of equipment to installation and commissioning and training of unskilled local staff



PRECAST CONCRETE & SOCIAL HOUSING

***Experienced shipment of equipment:***

Moldtech designs its equipment to fit in Opentop containers, in order to allow a safe and affordable shipping.





---

PRECAST CONCRETE & SOCIAL HOUSING

---

***EQUIPMENT FOR THE PRECAST FACTORY:***

21 tilting tables with 16 metres length x 3 metres width/height.

4 lines of 60 metres of fixed tables for floor slabs.

Accessories and other complementary equipment.



---

PRECAST CONCRETE & SOCIAL HOUSING

---

*TILTING TABLES, for Wall panel production.*





---

**PRECAST CONCRETE & SOCIAL HOUSING**

---

***PRECAST PLANT FOR SOCIAL HOUSING  
VENEZUELA***





---

**PRECAST CONCRETE & SOCIAL HOUSING**

---

***PRECAS PLANT FOR SOCIAL HOUSING  
ALGERIA***



---

## PRECAST CONCRETE & SOCIAL HOUSING

---

The houses are built with load bearing panels with 120mm thickness and half-slabs with 6cm thickness with PES foam insulation/weight reduction. The buildings do not require columns and the concrete compaction layer on top of the half-slab achieves a semi-monolithic construction.





---

**PRECAST CONCRETE & SOCIAL HOUSING**

---



Details of panels assembly with welded plates and positioning steel props.



---

**PRECAST CONCRETE & SOCIAL HOUSING**

---



---

**PRECAST CONCRETE & SOCIAL HOUSING**

---





---

**PRECAST CONCRETE & SOCIAL HOUSING**

---





---

PRECAST CONCRETE & SOCIAL HOUSING

---



---

**PRECAST CONCRETE & SOCIAL HOUSING**

---





---

PRECAST CONCRETE TECHNOLOGY



---

## PRECAST CONCRETE & SOCIAL HOUSING

---



---

Social Housing in Philippines





---

**PRECAST CONCRETE & SOCIAL HOUSING**

---



---

PRECAST CONCRETE TECHNOLOGY



---

## PRECAST CONCRETE & SOCIAL HOUSING

---



---

Social Housing in Philippines



---

**PRECAST CONCRETE & SOCIAL HOUSING**

---

